

PUBLISHED BY  
HELUKABEL® USA



Electrical System Solutions for Infrastructure

# DATA CENTERS

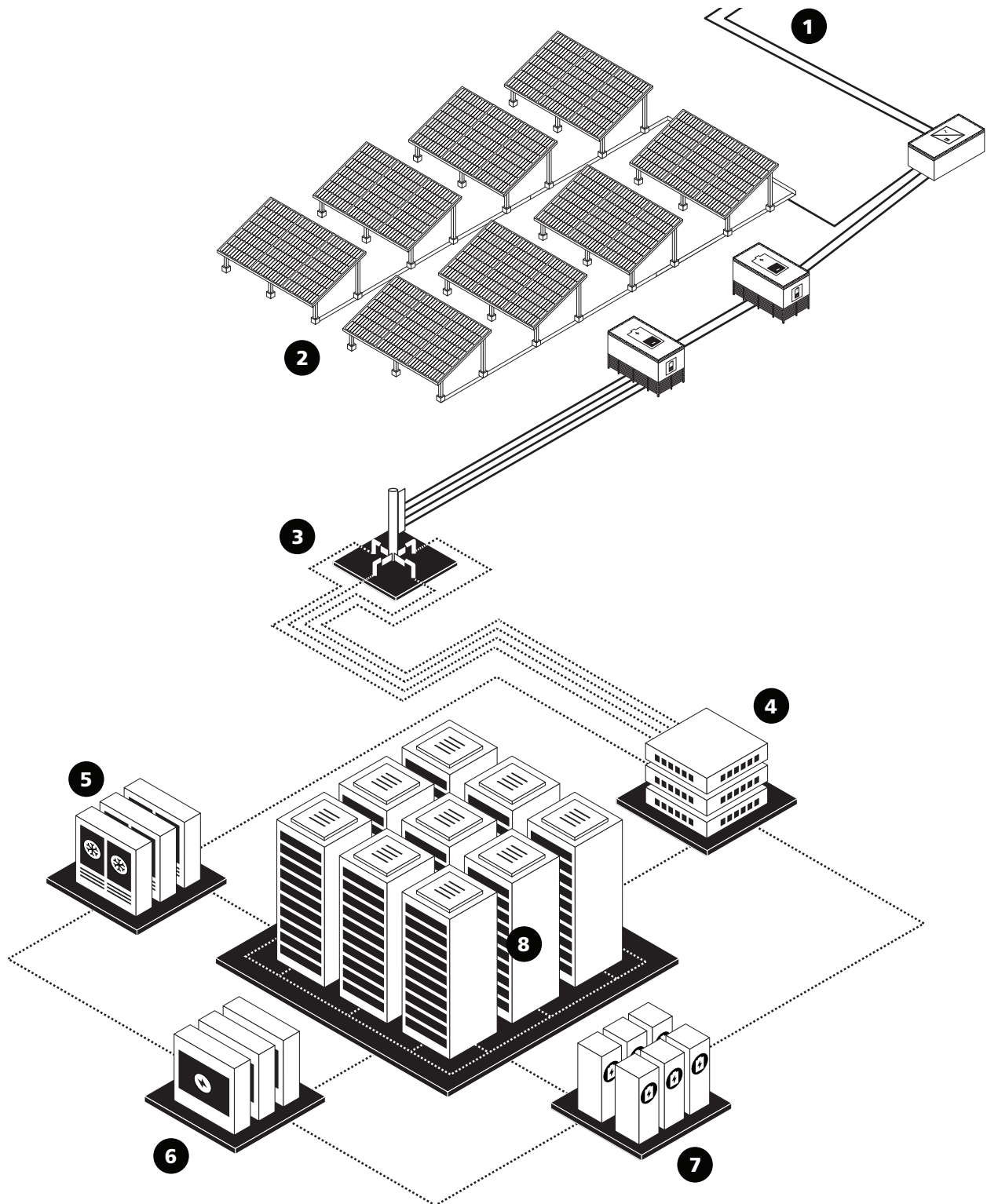
Ed. 1 // US



**(Channeling  
POWER)** 



# DATA CENTER CABLE ECOSYSTEM





# Data Center System Solutions

The demand for data centers is surging across North America, driven by the rapid growth of artificial intelligence (AI), cloud computing, and data storage needs. As these facilities scale in size and complexity, the importance of reliable power and communication infrastructure has never been greater. While most attention is placed on the cables running inside the data halls, the essential systems powering these centers rely on robust, industrial-grade connectivity. That's where HELUKABEL comes in.

Our extensive range of power, control, tray, and data cables are engineered for harsh conditions and long-term durability, supporting efficient power and data transmission while meeting UL, CSA, and NFPA standards required for North American projects.

## Powering the Facilities That Power the Digital World

Data center developments—whether hyperscale, colocation, or edge facilities—depend on critical building infrastructure to ensure 24/7 uptime. HELUKABEL supplies the cables and connectivity technology designed to perform in the demanding environments of:

- Backup generators and emergency power systems
- Mechanical rooms and HVAC systems
- Cooling and fire suppression systems
- Security and surveillance
- Lighting and building automation
- Energy management and grid connections

## Built for Reliability. Designed for Demanding Projects.

With decades of experience in large-scale infrastructure projects, HELUKABEL understands the unique challenges of data center construction. We offer:

- UL-listed tray cables for safe and compliant installations
- Flame-retardant, oil-resistant, and UV-stable jacket materials
- Flexible cable constructions for easy routing and installation
- North American inventory ready to meet tight construction timelines

### Data Center Cable Ecosystem Legend

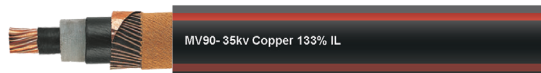
- |                             |                                       |
|-----------------------------|---------------------------------------|
| 1. Grid                     | 5. HVAC/AC                            |
| 2. Renewable energy (solar) | 6. Uninterruptible power supply (UPS) |
| 3. Switch gear              | 7. Battery storage & backup           |
| 4. Control center           | 8. Servers & racks                    |



## 1 GRID

### Medium-Voltage Cables

MV90/105, one or three conductors, 5-35 kV, for direct burial in both indoor and outdoor distribution networks, UV resistant, UL: 1072, CSA: C68.5



### Fiber-Optic Cables

Single-or multi-mode fiber types for data transfer between the center and external facilities over long distances, for direct burial, rodent protection available



## 2 RENEWABLE ENERGY (SOLAR)

### HELUPOWER® SOLARFLEX®-X RPVU90-CU

2000 V DC, resistant to: UV radiation, ozone, weathering effects, water, for outdoor use & direct burial, halogen free, UL: 4703 & VW-1, CSA: C22.2 No. 271-11 & FT1



### HELUPOWER® SOLARFLEX®-X RPVU90-AL

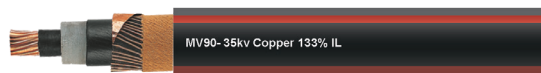
2000 V DC, resistant to: UV radiation, ozone, weathering effects, water, for outdoor use & direct burial, halogen free, UL: 4703 & VW-1, CSA: C22.2 No. 271-11 & FT1



## 3 SWITCH GEAR

### Medium-Voltage Cables

MV90/105, one or three conductors, 5-35 kV, for direct burial in both indoor and outdoor distribution networks, UV resistant, UL: 1072, CSA: C68.5





## 4 CONTROL CENTER

### 300 V Control/Instrumentation Cables

Flexible, oil resistant, PLTC-ER, ITC-ER, NFPA 79, unshielded & shielded, twisted-pair variants

Families: TRAYCONTROL® 300 & 300-C

TRAYCONTROL® 300 TP & 300-C TP



### 600 V Control/Power Cables

Flexible, oil resistant, TC-ER, PLTC-ER, ITC-ER, NFPA 79, unshielded & shielded, UL: 1277 & 2277,

CSA: C22.2 No. 210, 230 & 239

Families: TRAYCONTROL® 500 & 500-C (gray)

TRAYCONTROL® 600 & 600-C (black)



## 5 HVAC/AC

### 600/1000 V Control/Power Cables

Flexible, oil resistant, TC-ER, NFPA 79, unshielded & shielded, UL: 1277 & 2277, CSA: C22.2 No. 210, 230 & 239

Families: TRAYCONTROL® 500 & 500-C (gray)

TRAYCONTROL® 600 & 600-C (black)

TRAYCONTROL® 670 HDP & 670-C HDP (orange)



### Variable Frequency Drive (VFD) Cables

XLPE insulation, shielded, flexible motor power supply, oil resistant, NFPA 79, UL: 1277 & 2277, CSA: C22.2 No. 210, 230 & 239

Families: TOPFLEX® 600 VFD & 650 VFD (w/ pairs)

TOPFLEX® 1000 VFD (w/ symmetrical grounds)



## 6 UNINTERRUPTIBLE POWER SUPPLY (UPS)

### DLO Cables

2000 V, highly flexible, aluminum, bare or tinned copper conductors available, UL: 44 & VW-1, CSA: C22.2 No. 38 & FT1, FT4

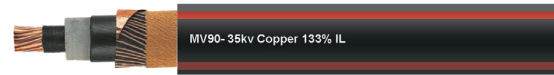




## 7 BATTERY STORAGE & BACKUP

### Medium-Voltage Cables

MV90/105, one or three conductors, 5-35 kV, for direct burial in both indoor and outdoor distribution networks, UV resistant, UL: 1072, CSA: C68.5



### 600/1000 V Control/Power Cables

Flexible, oil resistant, exposed run TC-ER, NFPA 79, unshielded & shielded, UL: 1277 & 2277, CSA: C22.2 No. 230 & 239  
Families: TRAYCONTROL® 500 & 500-C (gray)  
TRAYCONTROL® 600 & 600-C (black)  
TRAYCONTROL® 670 HDP & 670-C HDP (orange)



### DLO Cables

2000 V, highly flexible, aluminum, bare or tinned copper conductors available, UL: 44 & VW-1, CSA: C22.2 No. 38 & FT1, FT4



## 8 SERVERS & RACKS

### Ethernet Patch Cables

Utilized in the internal connection of switches and server racks within data centers, booted and unbooted, various data transmission rates, multiple jacket colors available.



### Fiber-Optic Patch Cables

Utilized in the internal cabling of data centers to transmit data between servers and other network hardware that are separated over long distances.





## OTHER SOLUTIONS

### Portable Power Cables

Type SJOOW & SOOW, heavy-duty rubber cables,  
UL: 62, CSA: C22.2 No. 49



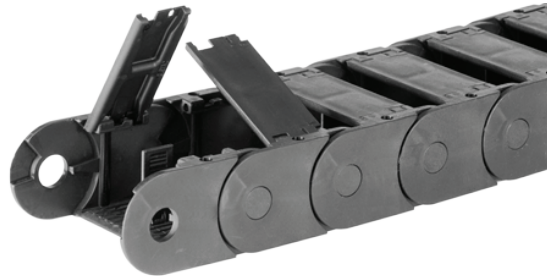
### Pre-Assembled, Ready-to-Install Cables

Cut to length, stripping, terminating, labeling for power,  
control, data & fiber-optic cable assemblies.



### HELUCHAIN® PLASTIC LINK 2-KL

Open and closed design possible, integrated mounting  
holes in every link, no end brackets needed, smallest cable  
drag chain: 10x12 mm, very versatile, can be used for many  
applications



## North American Contacts

Our product experts are available to answer your questions and provide customized solutions:

### HELUKABEL® Canada

3650 Odyssey Drive. Unit # 4 - 5,  
Mississauga, ON L5M 0Y9  
Tel: +1 289 444 5040  
sales@helukabel.ca  
www.helukabel.ca

### HELUKABEL® Mexico

Business Park Conín, Carretera Federal 57  
México, Querétaro,  
Lateral Norte Km 201 + 100,  
El Marqués, Querétaro  
Tel: +52 442 209 6400  
info@helukabel.mx  
www.helukabel.mx

### HELUKABEL® USA

1201 Wesemann Drive  
West Dundee, IL 60118  
Tel: +1 847-930-5118  
sales@helukabel.com  
www.helukabel.us



**(Channeling  
POWER)** 